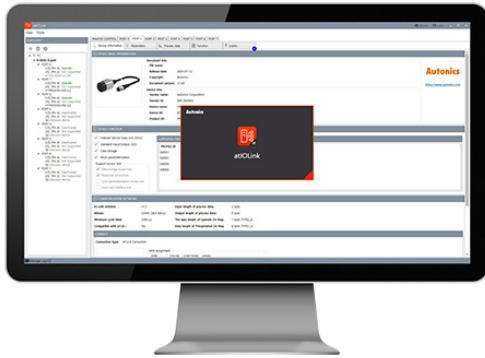


Comprehensive IO-Link Management Software



atIO-Link CATALOG

For your safety, read and follow the considerations written in the instruction manual, other manuals and Autonics website.

The specifications, dimensions, etc. are subject to change without notice for product improvement. Some models may be discontinued without notice.

Features

- Configuration of the ports on IO-Link Master
- Parameter setting of IO-Link device
- Real-time monitoring of IO-Link device
- Monitoring and controlling input/output process data of IO-Link device
- Simplified maintenance and repair of IO-Link device
 - : supports data storage
 - : supports restore to factory settings

Installation Specification

Download the installation program from the Autonics website.

Item	Minimum requirements
CPU	Intel i3, Ryzen 3 or above
OS	Windows 7 (×64) or higher
RAM	6 GB or higher
Storages	At least 10 GB of available HDD space
Resolution	1280×800 or higher (1920×1080 recommended)
Others	RJ45 Ethernet port, GigE network interface card

Manual

Please refer to the manual for correct use of the product and be sure to follow the precautions.

Download the manual from the Autonics website

Supported Device

■ Supported IO-Link devices of Autonics

Supported devices will be updated continuously.

For more information, refer to the manual of the supported device.

■ IO-Link (IO Device Description)

This file contains information such as manufacturer information, process data, diagnostic data, and parameter setting of a device using IO-Link communication.

By uploading the IO-Link file to PDCT Software, you can check the setting and communication data according to the user interface.

Download the IO-Link file from a manufacturer's website.