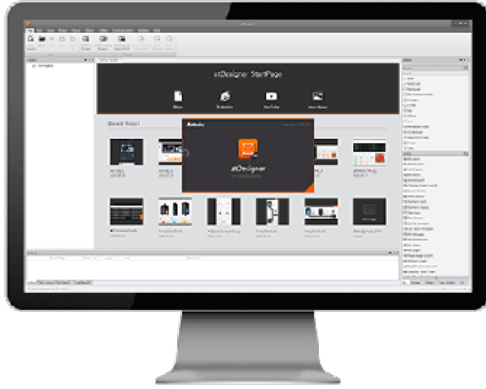


Screen Editor for LP/GP-A Series



atDesigner CATALOG

For your safety, read and follow the considerations written in the instruction manual, other manuals and Autonics website.

The specifications, dimensions, etc. are subject to change without notice for product improvement. Some models may be discontinued without notice.

Features

- Convenient user interface
- Supports Windows TrueType fonts and various bitmap fonts
- GP/LP hardware firmware upgrades
- Project conversion feature
 - Easily convert LP/GP-S series projects to LP/GP-A series projects
- Diverse image library provided
 - images / screen / keypad
- Overlap screen for improved screen editing efficiency and data size efficiency
- Checks for screen project and data validity executed automatically after download to GP/LP devices.
- Project simulator
 - Test edited projects using the project simulator function

* Please use the GP Editor software for editing screens on LP-S070, LP-S044, GP-S070, GPS057, GP-S044 series

Installation Specification

Download the installation program from the Autonics website.

Item	Recommended requirements
System	Intel Core i5-2nd gen. 2500 or above
OS	Microsoft Windows 7 / 10
RAM	8 GB or higher
Storage	At least 8 GB of available HDD space
Resolution	1920 × 1080 or higher
Others	RS232C Serial port (9-pin), USB port, Ethernet

Manual

Please refer to the manual for correct use of the product and be sure to follow the precautions.

Download the manual from the Autonics website.

Supported Device

■ Color LCD Graphic Panels GP-A Series



For more information, refer to the manual of the supported device.

■ Color LCD Logic Panels LP-A Series



For more information, refer to the manual of the supported device.