

## SSR - Panasonic, AQZ202D

### Input

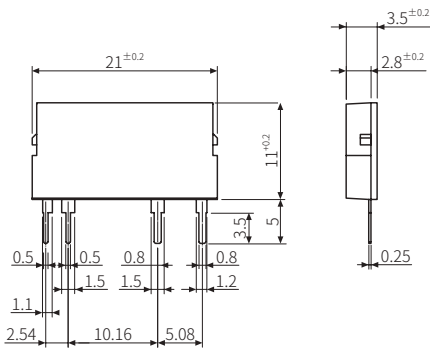
Rated voltage	Operate voltage	Release voltage	Input impedance
30 VDC≒	≥ 4 V	≤ 1.3 V	-

### Output

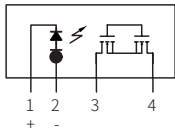
<b>Manufacture</b>	Panasonic
<b>Contact arrangement</b>	SPST-1a (N.O)
<b>Load voltage range</b>	60 VAC~ / DC≒ (Peak)
<b>Max. load current</b>	≤ 2.7 A
<b>Min. load current</b>	-
<b>Non-repetitive surge current</b>	9 A (Peak)
<b>Output OFF leakage current</b>	10 μA
<b>Output ON on voltage</b>	-
<b>Insulation resistance</b>	≥ 1,000 MΩ (500 VDC≒ megger)
<b>Dielectric strength (contact-coil)</b>	2,500 VAC~ 50/60 Hz for 1 minute
<b>Operate time</b>	≤ 10 ms
<b>Release time</b>	≤ 3 ms
<b>Ambient temperature</b>	-40 to 60 °C, storage: -40 to 100 °C (a non freezing or condensation environment)

### Dimensions

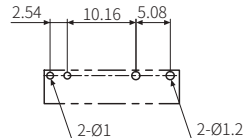
- unit: mm



- Circuit diagram (bottom view)



- PCB pattern



It was written based on the data provided by each manufacturer, but there is room for change, so be sure to check the manufacturer's data.

## SSR - Panasonic, AQG12124

### Input

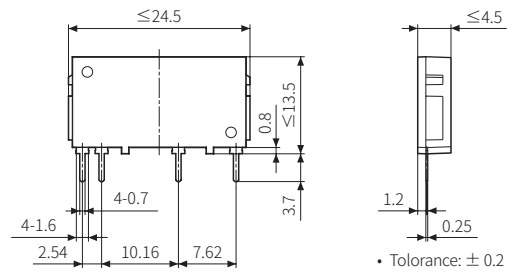
Rated voltage	Operate voltage	Release voltage	Input impedance
24 VDC≒ ± 20 %	≥ 19.2 VDC≒	≤ 1 V	≈ 1.6 kΩ

### Output

<b>Manufacture</b>	Panasonic
<b>Contact arrangement</b>	SPST-1a (zero cross turn-on)
<b>Load voltage range</b>	75-240 VAC~ 50/60 Hz
<b>Max. load current</b>	1 A
<b>Min. load current</b>	20 mA
<b>Non-repetitive surge current</b>	8 A
<b>Output OFF leakage current</b>	1.5 mA (at 200 VAC ~ 60 Hz)
<b>Output ON on voltage</b>	≤ 1.6 V (at max. current input)
<b>Insulation resistance</b>	≥ 1,000 MΩ (500 VDC≒ megger)
<b>Dielectric strength (contact-coil)</b>	3,000 VAC~ 50/60 Hz for 1 minute
<b>Operate time</b>	1/2 cycle of voltage sine wave + 1 ms
<b>Release time</b>	1/2 cycle of voltage sine wave + 1 ms
<b>Ambient temperature</b>	-30 to 80 °C, storage: -30 to 100 °C (a non freezing or condensation environment)

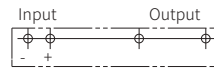
### Dimensions

- unit: mm

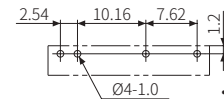


- Tolerance: ± 0.2

- Circuit diagram (bottom view)



- PCB pattern



- Tolerance: ± 0.1

It was written based on the data provided by each manufacturer, but there is room for change, so be sure to check the manufacturer's data.

## SSR - Panasonic, AQG22124

### Input

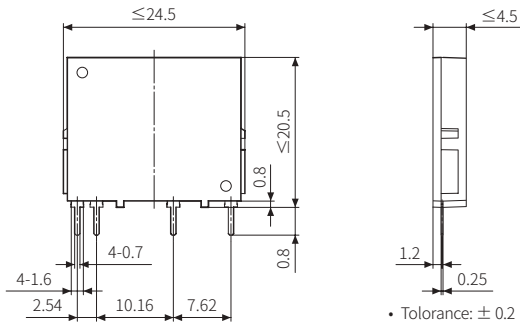
Rated voltage	Operate voltage	Release voltage	Input impedance
24 VDC $\pm$ 20 %	$\geq$ 19.2 VDC $\pm$	$\leq$ 1 V	$\approx$ 1.6 k $\Omega$

### Output

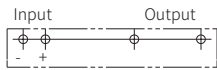
Manufacture	Panasonic
Contact arrangement	SPST-1a (zero cross turn-on)
Load voltage range	75-240 VAC $\sim$ 50/60 Hz
Max. load current	2 A
Min. load current	20 mA
Non-repetitive surge current	30 A
Output OFF leakage current	1.5 mA (at 200 VAC $\sim$ 60 Hz)
Output ON on voltage	$\leq$ 1.6 V (at max. current input)
Insulation resistance	$\geq$ 1,000 M $\Omega$ (500 VDC $\pm$ megger)
Dielectric strength (contact-coil)	3,000 VAC $\sim$ 50/60 Hz for 1 minute
Operate time	1/2 cycle of voltage sine wave + 1 ms
Release time	1/2 cycle of voltage sine wave + 1 ms
Ambient temperature	-30 to 80 °C, storage: -30 to 100 °C (a non freezing or condensation environment)

### Dimensions

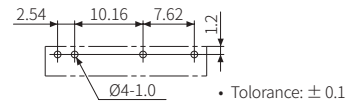
• unit: mm



• Circuit diagram (bottom view)



• PCB pattern



It was written based on the data provided by each manufacturer, but there is room for change, so be sure to check the manufacturer's data.

## SSR - OMRON, G3MC-202P

### Input

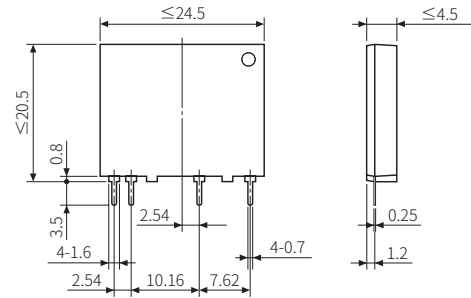
Rated voltage	Operate voltage	Release voltage	Input impedance
24 VDC $\pm$ 20 %	$\geq$ 19.2 VDC $\pm$	$\leq$ 1 V	$\approx$ 1.6 k $\Omega$ $\pm$ 20 %

### Output

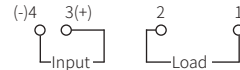
Manufacture	Panasonic
Contact arrangement	SPST-1a (zero cross turn-on)
Load voltage range	100-240 VAC $\sim$ 50/60 Hz
Max. load current	2 A
Min. load current	-
Non-repetitive surge current	30 A
Output OFF leakage current	1.5 mA (at 200 VAC $\sim$ 60 Hz)
Output ON on voltage	$\leq$ 1.6 V (at max. current input)
Insulation resistance	$\geq$ 1,000 M $\Omega$ (500 VDC $\pm$ megger)
Dielectric strength (contact-coil)	2,500 VAC $\sim$ 50/60 Hz for 1 minute
Operate time	1/2 cycle of voltage sine wave + 1 ms
Release time	1/2 cycle of voltage sine wave + 1 ms
Ambient temperature	-30 to 80 °C, storage: -30 to 100 °C (a non freezing or condensation environment)
Weight	$\approx$ 2.5 g

### Dimensions

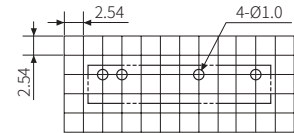
• unit: mm



• Circuit diagram (bottom view)



• PCB pattern



It was written based on the data provided by each manufacturer, but there is room for change, so be sure to check the manufacturer's data.

## SSR - Fujitsu (TAKAMISAWA), SN-24A01C

### Input

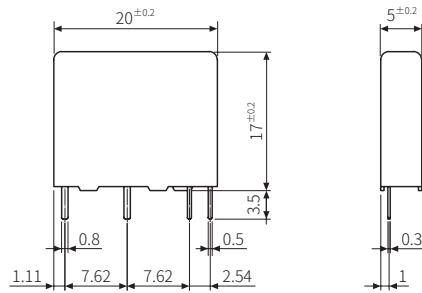
Rated voltage	Operate voltage	Release voltage	Input impedance
24 VDC $\pm$ 20 %	$\geq$ 80% of rated voltage	$\leq$ 1 V	2.2 k $\Omega$

### Output

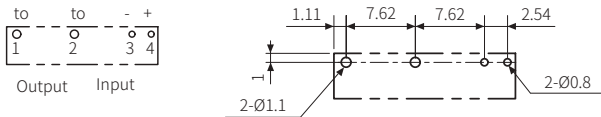
Manufacture	Fujitsu
Contact arrangement	SPST-1a (zero cross turn-on)
Load voltage range	24-240 VAC $\sim$
Max. load current	1 A
Min. load current	10 mA
Non-repetitive surge current	50 A
Output OFF leakage current	3.0 mA rms (at 200 Vrms 60 Hz)
Output ON on voltage	1.2 Vrms
Insulation resistance	$\geq$ 1,000 M $\Omega$ (500 VDC $\rightleftharpoons$ megger)
Dielectric strength (contact-coil)	2,500 VAC $\sim$ 50/60 Hz for 1 minute
Operate time	1/2 cycle of voltage sine wave + 1 ms
Release time	1/2 cycle of voltage sine wave + 1 ms
Ambient temperature	-30 to 85 $^{\circ}$ C, storage: -40 to 100 $^{\circ}$ C (a non freezing or condensation environment)
Weight	$\approx$ 3.5 g

### Dimensions

• unit: mm



• Circuit diagram (bottom view) • PCB pattern



It was written based on the data provided by each manufacturer, but there is room for change, so be sure to check the manufacturer's data.