



Model Number

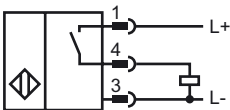
IT 12-8N-PS-M3

Inductive sensor

Features

- Basic series
- 8 mm not embeddable

Connection

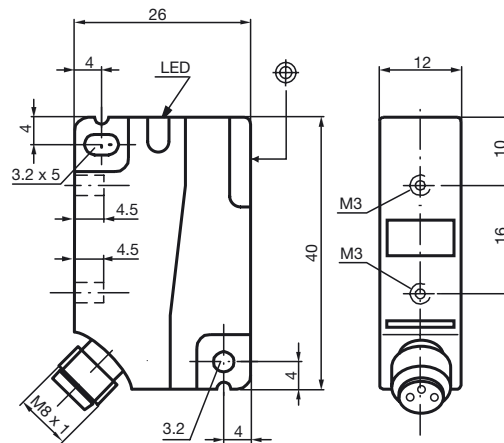


Safety Note



The use of this device in applications, where the safety of persons depends from the devices function, is not allowed!

Dimensions



Technical Data

General specifications

Switching element function	PNP Make function
Rated operating distance	s_n 8 mm
Installation	not embeddable
Output polarity	DC
Assured operating distance	s_a 0 ... 6.48 mm
Reduction factor r_{AI}	0.3
Reduction factor r_{Cu}	0.2
Reduction factor r_{V2A}	0.7

Nominal ratings

Operating voltage	U_B	10 ... 30 V
Switching frequency	f	0 ... 1400 Hz
Reverse polarity protection		protected against reverse polarity
Short-circuit protection		pulsing
Voltage drop	U_d	≤ 2.5 V
Operating current	I_L	0 ... 250 mA
Off-state current	I_r	0 ... 0.01 mA typ. 0.1 μ A at 25 °C
No-load supply current	I_o	≤ 15 mA
Indication of the switching state		LED, yellow

Standard conformity

Standards	IEC / EN 60947-5-2:2004
-----------	-------------------------

Ambient conditions

Ambient temperature	-25 ... 70 °C (248 ... 343 K)
---------------------	-------------------------------

Mechanical specifications

Connection type	connector M8 x 1, 3-pin
Housing material	PA
Sensing face	PA
Protection degree	IP67

Approvals and certificates

UL approval	cULus Listed, General Purpose
-------------	-------------------------------